

Reproduction, dissemination or use of this document or its contents in any form without the prior written permission of TURASAS is prohibited. Offenders will be liable for the payment of damages. All rights reserved in the event of the grant of a patent, utility model or ornamental design registration.

ISO 13920 Welded Construction			ISO 2768 General Tolerances			S 12708 Steel Casting		
L mm	A	E	L mm	Ham	Isl.	Nom. Size	Class	
<1000	6,0	0,8	<1000	6,0	0,8	<1000	2,0	0,4
<400	4,0	0,7	<630	4,0	0,7	<2000	1,2	0,4
<250	3,0	0,6	<400	3,0	0,6	<1000	0,8	0,3
<100	2,0	0,5	<250	3,0	0,4	<400	0,5	0,3
<40	1,5	0,2	100	2,0	0,3	30-120	0,3	0,2
			40	1,5	0,2	2-30	0,2	0,1
			L mm	m	±	K	±	
			Nom. Size	Class				
			>20000	9,0	8,0			
			<20000	8,0	7,0			
			<16000	7,0	6,0			
			<12000	6,0	5,0			
			<8000	5,0	4,0			
			<4000	4,0	3,0			
			<2000	3,0	2,0			
			<1000	2,0	1,5			
			<400	1,0	1,0			
			30-120	1,0	0,5			
			2-30	1,0	0,5			
			L mm	A	±	E	±	
			Nom. Size	Class				

STEEL SHEETS NOTES:

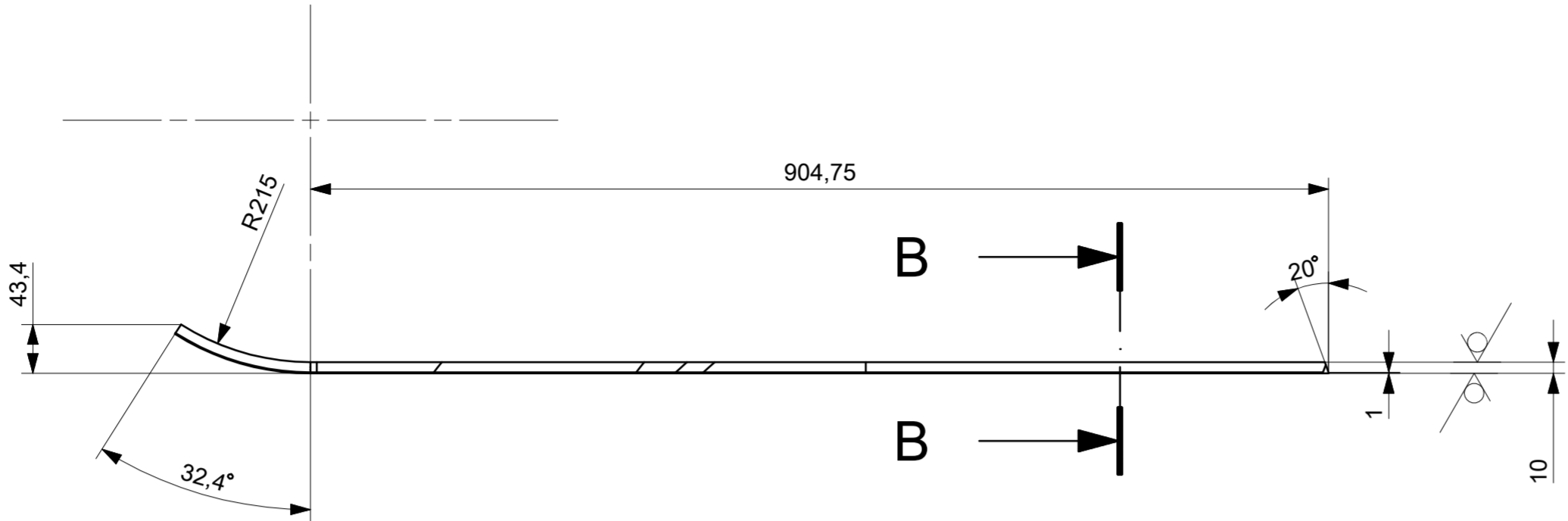
Thermal cutting - Classification of thermal cuts -
Geometrical product specification and quality tolerances
According to EN ISO 9013 - 231

Hot-rolled steel plates 3 mm thick or above -
Tolerances on dimensions and shape
According to EN10029 - B

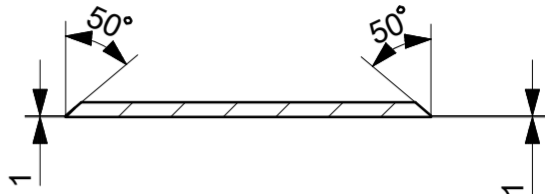
True length theoretically according to DIN 6935

Technical Specifications					
Technical Document					
Fixture/Mould Asset ID.					
Coating/Heat Tre./Roughness					
Paint/Color					
Mod. No			Modification Description		
Date			Sign		

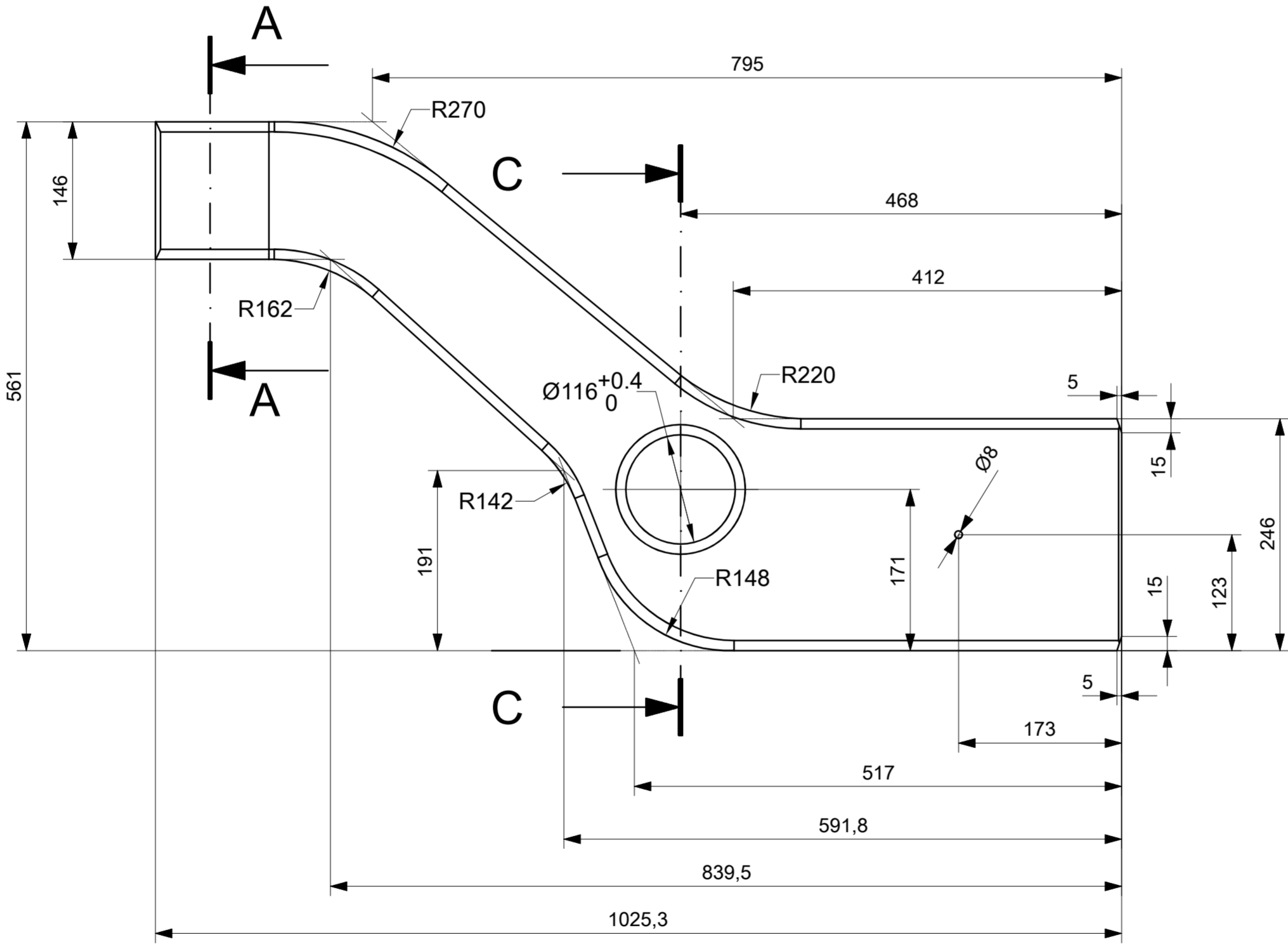
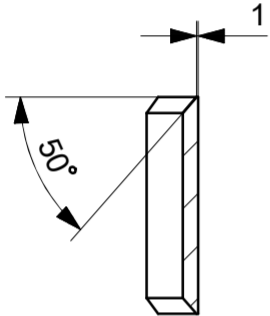
Ra 12.5 (✓)



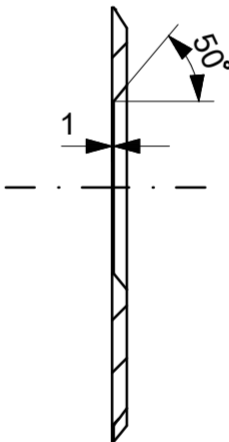
SECTION B-B



SECTION A-A


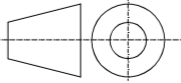


SECTION C - C



Edge without dimension according to DIN ISO 13715

±0.3 ±0.3

				S355J2 EN 10025		16.7
Item No	Designation Name of Item	Qty.	Standard Identification No Company	Material Company Code	Dimension	Weight (Kg)
TYP	ISO 21920-1	ISO 8015	ISO 2553	General Tol.	ISO 2768	f <input type="checkbox"/> m <input checked="" type="checkbox"/> H <input type="checkbox"/> K <input checked="" type="checkbox"/>
	EN 15085-2 Certification Level		CL1 <input type="checkbox"/> CL2 <input type="checkbox"/> CL3 <input type="checkbox"/>	Weld Pro.	ISO 13920	A <input checked="" type="checkbox"/> B <input type="checkbox"/> E <input checked="" type="checkbox"/> F <input type="checkbox"/>
				Cast Steel	TS 12708	Lm2 <input type="checkbox"/> Lr2 <input type="checkbox"/> Sm2 <input type="checkbox"/> Sr2 <input type="checkbox"/>
	Approved	T.BAZ	12.07.2024	Scale	<div> Turkish Railway Vehicles Industry Inc.</div>	
	Checked	M.ÇUHADAR	12.07.2024	1 : 5		
	Prepared	T.ŞABA	12.07.2024			
		Internal plate RH			EM20.24.03.52001	
Date:	Parts List No:			Sheet: 1/1	Size:A2	Rev:00